



SIP1

Self Installing Platform Type 1



SPT Offshore



SIP1

Self Installing Platform

Type 1

If you're looking for a fast-track and cost efficient platform which can be quickly installed offshore, the SIP1 is the solution.

Product characteristics

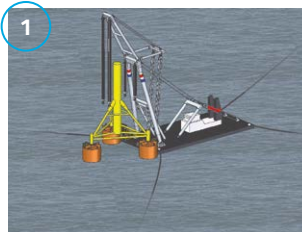
- Braced monopile founded on suction piles
- Topsides weight up to 1,000 ton
- Water depth up to 100m
- Up to 6 conductors protected in the main column

Benefits of the SIP1

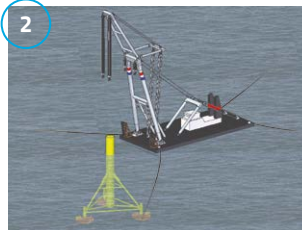
- **Proven** proprietary technology with 4 successful SIP1 installations
- Offshore **installation** in less than **16 hours**
- Platform can **easily be relocated**, spreading CAPEX
- **Fabrication costs** are **reduced significantly**, since no pile sleeves, -catchers, -centralizers, mud mats and leveling padeyes are required
- **No pile drive-**, leveling- and grout **spread** and **operation required**
- **Noise free** installation and removal
- **Cold commissioning** can be performed onshore
- **Engineering and installation by one party**, hence SPT Offshore takes over installation and in-situ **responsibility**
- If buoyancy tanks are applied, **no heavy lift vessel** is required for installation

Transportation and installation

Installation by sheerleg



Tow to field, anchor and position

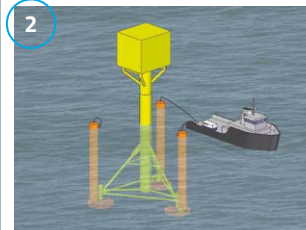


*Lower to seabed, install suction piles and unhook
Installation by buoyancy tanks*

Installation by buoyancy tanks



Wet tow to field, anchor and position



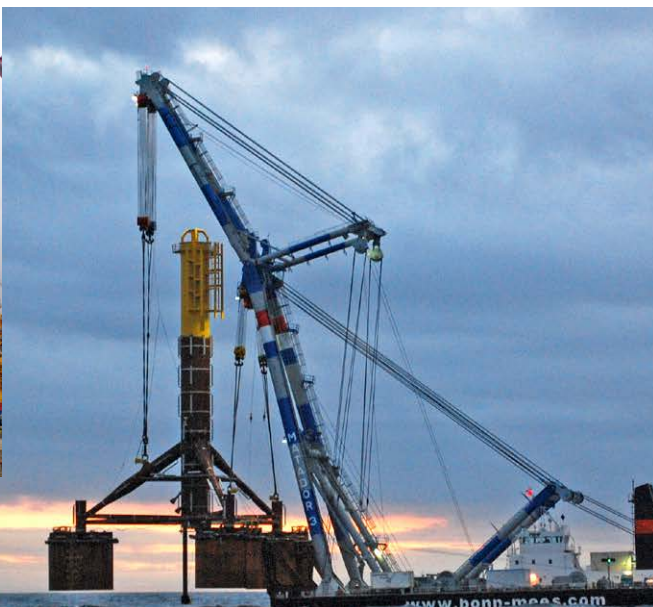
Ballast to seabed, install suction piles and recover ballast tanks

Optionally, the topsides can be installed separately

SPT Offshore track record for SIP1



Wintershall L6B



Ithaca Energy Jacky



CLP Met Mast